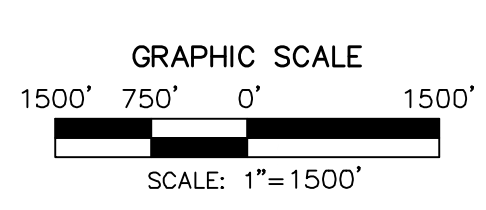
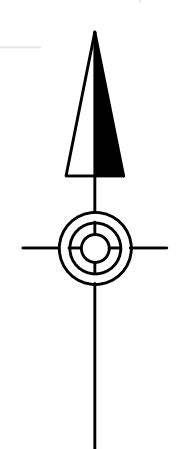
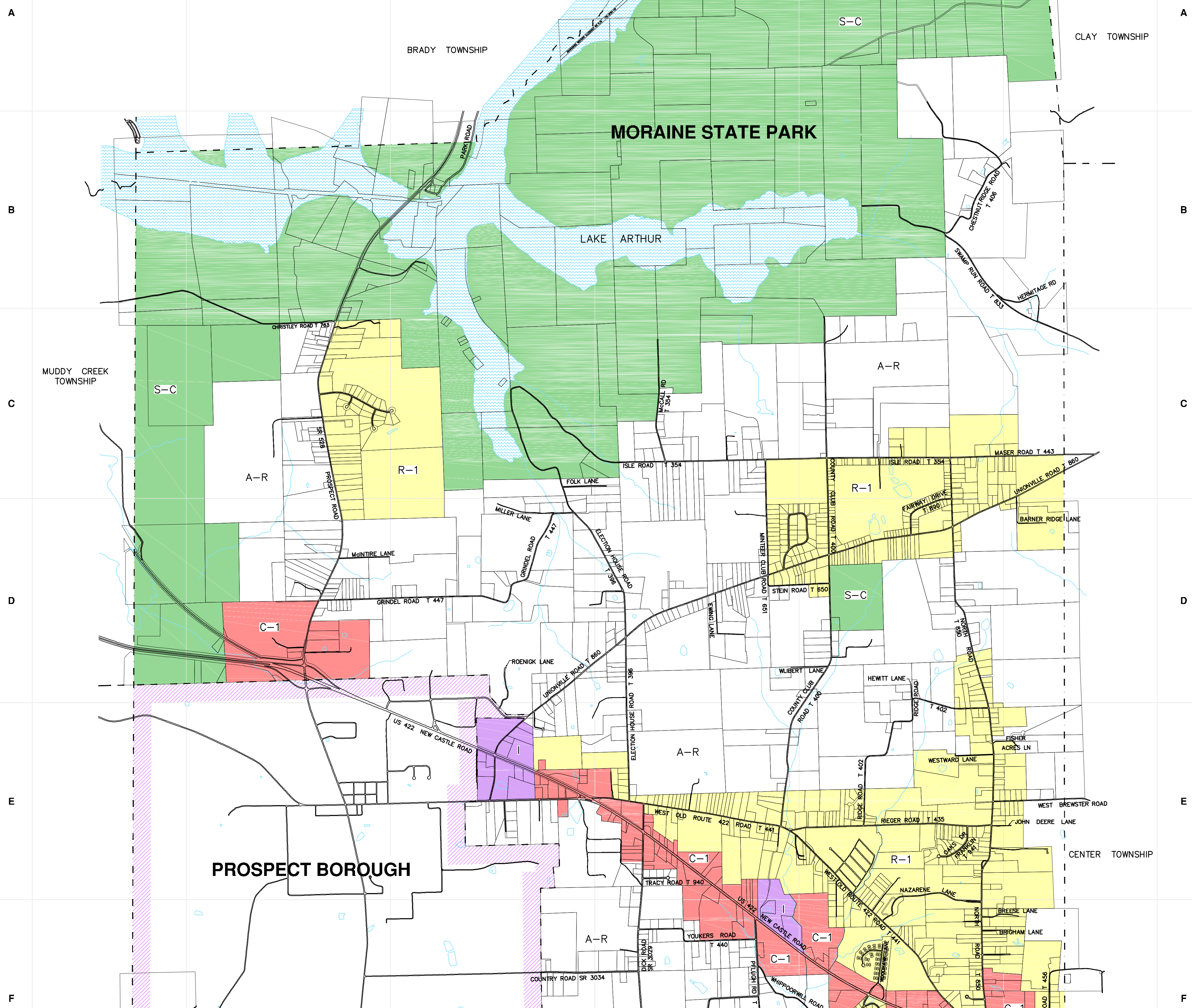


1 2 3 4 5 6



- LEGEND**
- A-R AGRICULTURE - RESIDENTIAL
 - R-1 RURAL RESIDENTIAL
 - C-1 GENERAL COMMERCIAL
 - I GENERAL INDUSTRIAL
 - S-C SPECIAL CONSERVATION
 - PROSPECT BOROUGH BOUNDARY
 - MUNICIPAL BOUNDARY

NOTES:
 PARCEL DATA RECEIVED FROM BUTLER COUNTY
 MAPPING DEPARTMENT.
 PARCEL DATA LAST UPDATED: OCTOBER 26, 2016

1 2 3 4 5 6

DRAWING NO.
MAP
 SHEET NO.
 1 OF 1
 PROJECT 007655.0425

HRG
 Herbert Rowland & Grubic, Inc.
 Engineering & Related Services
 AN EMPLOYEE-OWNED COMPANY

200 West Kensing Drive, Suite 400
 Cranberry Township, PA 16066
 (724) 779-4777
 Fax (724) 779-4711
 hrgr@hrg-inc.com
 www.hrg-inc.com

FRANKLIN TOWNSHIP, BUTLER COUNTY
 191 ELECTION HOUSE ROAD
 PROSPECT, PENNSYLVANIA 16052

ZONING DISTRICTS MAP
 FOR
FRANKLIN TOWNSHIP

FRANKLIN TWP. BUTLER COUNTY PENNSYLVANIA

REVISION	DATE

PROJ. MGR. - KJB
 DESIGN -
 CADD - CRC
 CHECKED -
 SCALE - 1" = 1500'
 DATE - FEB. 19, 2018

File name: P:\007655\007655_0425\CAD\Map\Final\0076550425_ZONING.dwg Layout: Zoning Map Feb 21, 2018 - 6:10pm cccadwin